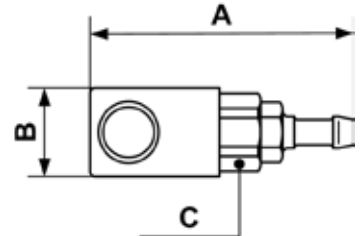


STAINLESS STEEL QUICK COUPLING - 1/4" INDUSTRIAL PROFILE



Hose stem coupler - Stainless Steel

Profile : ISO 6150B



Min/max operating pressure 0 / 174 psi	Flow rate at 87 psi 28 CFM	ID passage 1/4"	Temperature min/max 5 / 158 °F
--	--------------------------------------	---------------------------	--

Part number	For hose ID	Net weight (Kg)	Dim. A (inch)	Dim. B (inch)	Dim. C (inch)
PROXI 061806	1/4"	0,108	3.07	1.1	0.91
PROXI 061810	3/8"	0,09	3.07	1.1	0.91